

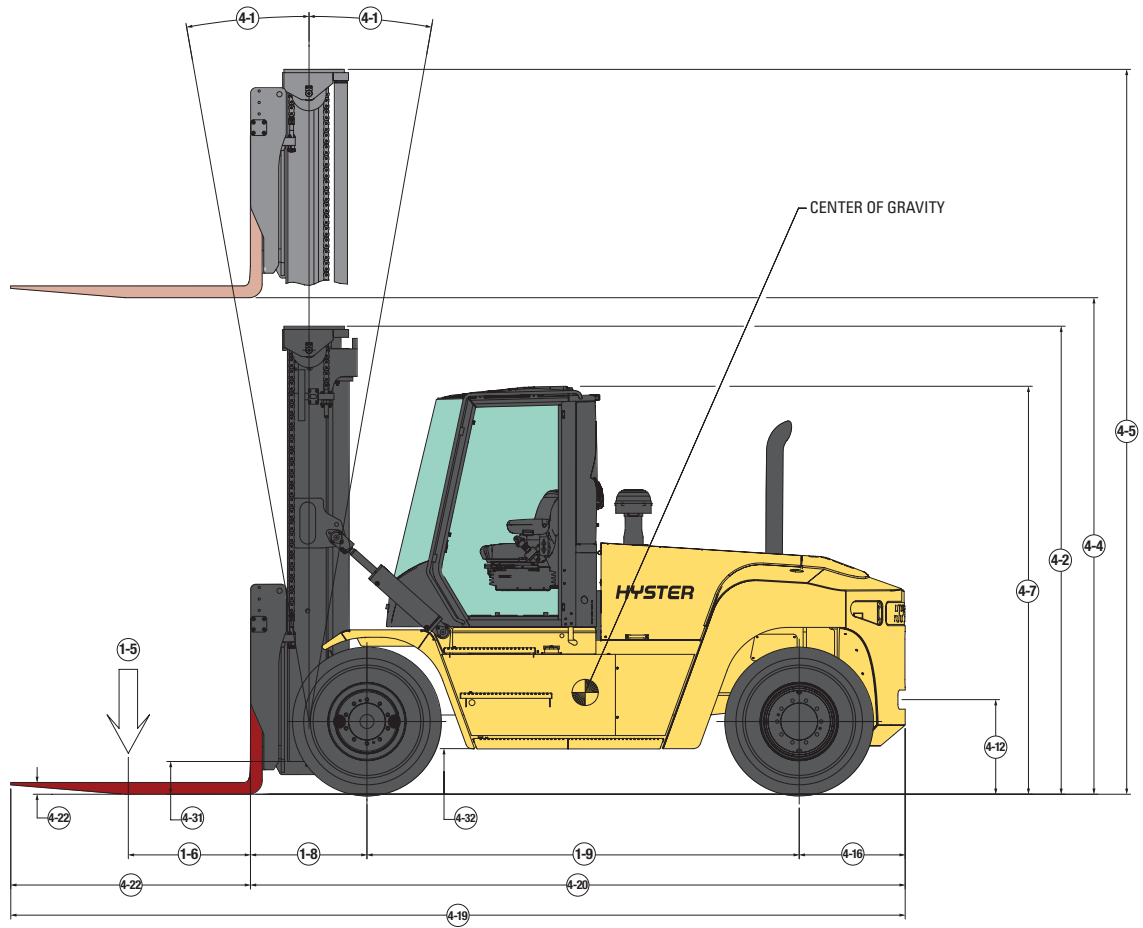


**STRONG PARTNERS.
TOUGH TRUCKS.™**

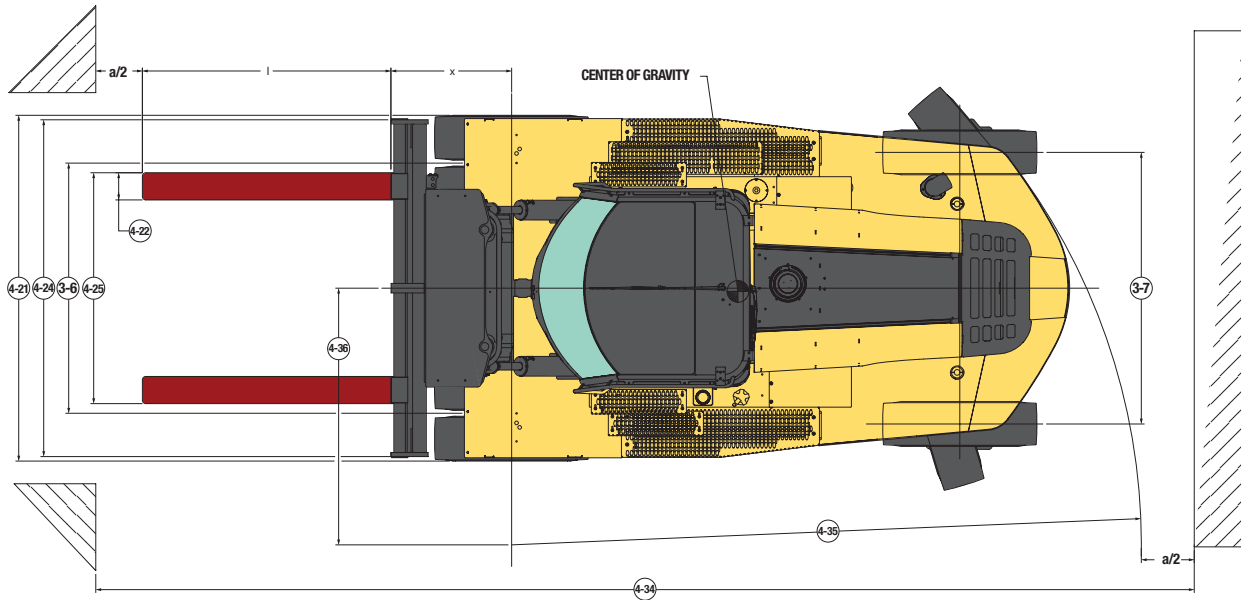
H210-250XD48, H300-360XD SERIES TECHNICAL GUIDE

WWW.HYSTER.COM

> DIMENSIONS



☉ = Center of gravity of unladen truck



H300XD / H330XD SPECIFICATIONS <

				H300XD				H330XD							
GENERAL	1-1	Manufacturer			HYSTER				HYSTER						
	1-2	Model designation			H300XD				H330XD						
	1-3	Powertrain / drivetrain			Diesel				Diesel						
	1-4	Operator type			Seated				Seated						
	1-5	Rated capacity / rated load	Q	lbs	kg	30,000		13,608		33,000		14,969			
	1-6	Load center distance	c ₁	in	mm	24		610		24		610			
	1-8	Load distance	x	in	mm	35		889		35		889			
	1-9	Wheelbase	y	in	mm	130		3,300		130		3,300			
	WT.	2-1	Total truck weight without load			39,328		17,839		41,103		18,644			
2-2		Axle loading with load, front / rear		lbs	kg	64,122	29,085	5,206	2,362	68,444	31,046	5,658	2,567		
2-3		Axle loading without load, front / rear		lbs	kg	20,498	9,298	18,830	8,541	20,459	9,280	20,644	9,364		
WHEELS	3-1	Tire type			Pneumatic				Pneumatic						
	3-2	Tire size, front			12.00-20 20PR				12.00-20 20PR						
	3-3	Tire size, rear			12.00-20 20PR				12.00-20 20PR						
	3-5	Wheels, number front / rear (x = driven wheels)			x4 / 2				x4 / 2						
	3-6	Tread, front	b ₁₀	in	mm	72.5		1,842		72.5		1,842			
	3-7	Tread, rear	b ₁₁	in	mm	78.7		2,000		78.7		2,000			
	DIMENSIONS	4-1	Mast tilt, forward / backward	α/β	deg	15° / 12°				15° / 12°					
4-2		Height, mast lowered	h ₁	in	mm	141		3,568		141		3,568			
4-3		Free lift (top of forks)	h ₂	in	mm	0		0		0		0			
4-4		Lift (top of forks)	h ₃	in	mm	147		3,750		147		3,750			
4-5		Height, mast extended	h ₄	in	mm	213		5,398		213		5,398			
4-7		Height to top of operator compartment (open cab)	h ₆	in	mm	121.4		3,083		121.4		3,083			
4-7-1		Height, top of operator comp (closed cab)	h ₆	in	mm	122.4		3,110		122.4		3,110			
4-7-2		Height, top of operator comp (closed cab w/ airco)	h ₆	in	mm	122.4		3,110		122.4		3,110			
4-7-3		Height, top of operator comp (closed cab w/ strobe light)	h ₆	in	mm	126.2		3,205		126.2		3,205			
4-7-4		Height, top of operator comp (closed cab w/ work lights)	h ₆	in	mm	128.3		3,259		128.3		3,259			
4-7-5		Height, top of operator comp (closed cab w/ airco & strobe)	h ₆	in	mm	127.4		3,235		127.4		3,235			
4-8		Seat height to seat point index	h ₇	in	mm	74.9		1,903		74.9		1,903			
4-19		Overall length	l ₁	in	mm	269		6,828		269		6,828			
4-20		Length to face of forks	l ₂	in	mm	197		4,998		197		4,998			
4-21		Overall width	b ₂	in	mm	100		2,541		100		2,541			
4-22		Fork dimensions ISO 2331	s/e/l	in	mm	3.5 / 8 / 72		90 / 200 / 1,830		3.5 / 8 / 72		90 / 200 / 1,830			
4-23		Fork carriage type				Standard pin type carriage				Standard pin type carriage					
4-24		Fork carriage width	b ₃	in	mm	98.3		2,496		98.3		2,496			
4-25-1		Distance between fork-arms, minimum (in-in)	b ₅	in	mm	2.8		70		2.8		70			
4-25-2		Distance between fork-arms, maximum (out-out)	b ₅	in	mm	95.3		2,420		95.3		2,420			
4-30		Sideshift	b ₆	in	mm	0		0		0		0			
4-31	Ground clearance, with load, below mast	m ₁	in	mm	10		245		10		245				
4-32	Ground clearance, center of wheelbase	m ₂	in	mm	13		341		13		341				
4-34	Min. aisle width (add load length and clearance)	Ast	in	mm	215		5,473		215		5,473				
4-35	Outside turning radius	W ₆	in	mm	180		4,584		180		4,584				
PERFORMANCE	PERFORMANCE											Cummins QSB 6.7L Tier 4F Engine			
	5-1	Travel speed, with / without load (1)		mph	km/h	17	27	18	29	17	27	18	29		
	5-1-1	Travel speed, with load locked / without load		mph	km/h	On request		On request		On request		On request			
	5-2	Lifting speed, with / without load 126cc pump		ft/min	m/s	81	0.41	91	0.46	81	0.41	91	0.46		
	5-3	Lowering speed with / without load		ft/min	m/s	98	0.50	94	0.48	98	0.50	94	0.48		
	5-5	Drawbar pull - 1 mph 1.6 km/h, with / without load		lbs.	kN	22,900	109	24,100	111	22,800	108	24,000	111		
	5-6	Drawbar pull - stall, with / without load		lbs.	kN	25,700	121	26,900	123	25,600	121	26,800	123		
	5-7	Gradeability - 1 mph 1.6 km/h, with / without load		%		37		37		35		35			
	5-8	Gradeability - stall, with / without load		%		42		37		39		35			
	PERFORMANCE											Cummins QSB 6.7L Tier 3 Engine			
	5-1	Travel speed, with / without load (1)		mph	km/h	17	27	18	29	17	27	18	29		
	5-1-1	Travel speed, with load locked / without load		mph	km/h	On request		On request		On request		On request			
	5-2	Lifting speed, with / without load 111cc pump		ft/min	m/s	71	0.36	79	0.40	71	0.36	79	0.40		
	5-3	Lowering speed with / without load		ft/min	m/s	98	0.50	94	0.48	98	0.50	94	0.48		
	5-5	Drawbar pull - 1 mph 1.6 km/h, with / without load		lbs.	kN	20,800	99	22,000	102	20,700	99	21,900	101		
	5-6	Drawbar pull - stall, with / without load		lbs.	kN	23,600	111	24,700	114	23,400	111	24,600	114		
5-7	Gradeability - 1 mph 1.6 km/h, with / without load		%		33		37		31		35				
5-8	Gradeability - stall, with / without load		%		38		37		50		35				

> H360XD / H210XD48 SPECIFICATIONS

GENERAL	1-1		HYSTER				HYSTER				
	Manufacturer		H360XD				H210XD48				
WT.	1-2		Diesel				Diesel				
	Model designation		Seated				Seated				
WHEELS	1-3		36,000				16,329				
	Powertrain / drivetrain		21,000				9,525				
DIMENSIONS	1-4		24				610				
	Operator type		48				1220				
PERFORMANCE	1-5		35				889				
	Rated capacity / rated load	Q	lbs	kg	35				889		
PERFORMANCE	1-6		130				3,300				
	Load center distance	c ₁	in	mm	130				3,300		
PERFORMANCE	1-8		42,867				19,444				
	Load distance	x	in	mm	21,090				9,566		
PERFORMANCE	1-9		72.5				1,842				
	Wheelbase	y	in	mm	72.5				1,842		
PERFORMANCE	2-1		78.7				2,000				
	Total truck weight without load		lbs	kg	78.7				2,000		
PERFORMANCE	2-2		15° / 12°				15° / 12°				
	Axle loading with load, front / rear		lbs	kg	15° / 12°				15° / 12°		
PERFORMANCE	2-3		141				3,568				
	Axle loading without load, front / rear		lbs	kg	141				3,568		
PERFORMANCE	3-1		0				0				
	Tire type		lbs	kg	0				0		
PERFORMANCE	3-2		147				3,750				
	Tire size, front		lbs	kg	147				3,750		
PERFORMANCE	3-3		213				5,398				
	Tire size, rear		lbs	kg	213				5,398		
PERFORMANCE	3-4		121.4				3,083				
	Wheels, number front / rear (x = driven wheels)		lbs	kg	121.4				3,083		
PERFORMANCE	3-6		122.4				3,110				
	Tread, front	b ₁₀	in	mm	122.4				3,110		
PERFORMANCE	3-7		122.4				3,110				
	Tread, rear	b ₁₁	in	mm	122.4				3,110		
PERFORMANCE	4-1		126.2				3,205				
	Mast tilt, forward / backward	α/β	deg	deg	126.2				3,205		
PERFORMANCE	4-2		128.3				3,259				
	Height, mast lowered	h ₁	in	mm	128.3				3,259		
PERFORMANCE	4-3		127.4				3,235				
	Free lift (top of forks)	h ₂	in	mm	127.4				3,235		
PERFORMANCE	4-4		74.9				1,903				
	Lift (top of forks)	h ₃	in	mm	74.9				1,903		
PERFORMANCE	4-5		269				6,823				
	Height, mast extended	h ₄	in	mm	269				6,823		
PERFORMANCE	4-7		197				4,998				
	Height to top of operator compartment (open cab)	h ₆	in	mm	197				4,998		
PERFORMANCE	4-7-1		100				2,541				
	Height, top of operator comp (closed cab)	h ₆	in	mm	100				2,541		
PERFORMANCE	4-7-2		3.5 / 8 / 72				90 / 200 / 1,830				
	Height, top of operator comp (closed cab w/ airco)	h ₆	in	mm	3.5 / 8 / 72				90 / 200 / 1,830		
PERFORMANCE	4-7-3		98				2,496				
	Height, top of operator comp (closed cab w/ strobe light)	h ₆	in	mm	98				2,496		
PERFORMANCE	4-7-4		2.8				70				
	Height, top of operator comp (closed cab w/ work lights)	h ₆	in	mm	2.8				70		
PERFORMANCE	4-7-5		95.3				2,420				
	Height, top of operator comp (closed cab w/ airco & strobe)	h ₆	in	mm	95.3				2,420		
PERFORMANCE	4-8		0				0				
	Seat height to seat point index	h ₇	in	mm	0				0		
PERFORMANCE	4-19		10				245				
	Overall length	l ₁	in	mm	10				245		
PERFORMANCE	4-20		13				341				
	Length to face of forks	l ₂	in	mm	13				341		
PERFORMANCE	4-21		215				5,473				
	Overall width	b ₂	in	mm	215				5,473		
PERFORMANCE	4-22		180				4,584				
	Fork dimensions ISO 2331	s/e/l	in	mm	180				4,584		
PERFORMANCE	4-23		Standard pin type carriage				Standard pin type carriage				
	Fork carriage type		Standard pin type carriage				Standard pin type carriage				
PERFORMANCE	4-24		98				2,496				
	Fork carriage width	b ₃	in	mm	98				2,496		
PERFORMANCE	4-25-1		2.8				70				
	Distance between fork-arms, minimum (in-in)	b ₅	in	mm	2.8				70		
PERFORMANCE	4-25-2		95.3				2,420				
	Distance between fork-arms, maximum (out-out)	b ₅	in	mm	95.3				2,420		
PERFORMANCE	4-30		0				0				
	Sideshift	b ₈	in	mm	0				0		
PERFORMANCE	4-31		10				245				
	Ground clearance, with load, below mast	m ₁	in	mm	10				245		
PERFORMANCE	4-32		13				341				
	Ground clearance, center of wheelbase	m ₂	in	mm	13				341		
PERFORMANCE	4-34		215				5,473				
	Min. aisle width (add load length and clearance)	Ast	in	mm	215				5,473		
PERFORMANCE	4-35		180				4,584				
	Outside turning radius	W ₄	in	mm	180				4,584		
PERFORMANCE	5-1		Cummins QSB 6.7L Tier 4F Engine								
	Travel speed, with / without load (1)		mph	km/h	17	27	18	29	17	27	18
PERFORMANCE	5-1-1		On request				On request				
	Travel speed, with load locked / without load		mph	km/h	On request				On request		
PERFORMANCE	5-2		81				0.41				
	Lifting speed, with / without load 126cc pump		ft/min	m/s	81				0.41		
PERFORMANCE	5-3		98				0.50				
	Lowering speed with / without load		ft/min	m/s	98				0.50		
PERFORMANCE	5-5		22,500				108				
	Drawbar pull - 1 mph 1.6 km/h, with / without load		lbs.	kN	22,500				108		
PERFORMANCE	5-6		26,800				123				
	Drawbar pull - stall, with / without load		lbs.	kN	26,800				123		
PERFORMANCE	5-7		32				38				
	Gradeability - 1 mph 1.6 km/h, with / without load		%		32				38		
PERFORMANCE	5-8		36				38				
	Gradeability - stall, with / without load		%		36				38		
PERFORMANCE	5-1		Cummins QSB 6.7L Tier 3 Engine								
	Travel speed, with / without load (1)		mph	km/h	17	27	18	29	17	27	18
PERFORMANCE	5-1-1		On request				On request				
	Travel speed, with load locked / without load		mph	km/h	On request				On request		
PERFORMANCE	5-2		71				0.36				
	Lifting speed, with / without load 111cc pump		ft/min	m/s	71				0.36		
PERFORMANCE	5-3		98				0.50				
	Lowering speed with / without load		ft/min	m/s	98				0.50		
PERFORMANCE	5-5		20,400				98				
	Drawbar pull - 1 mph 1.6 km/h, with / without load		lbs.	kN	20,400				98		
PERFORMANCE	5-6		23,200				111				
	Drawbar pull - stall, with / without load		lbs.	kN	23,200				111		
PERFORMANCE	5-7		29				38				
	Gradeability - 1 mph 1.6 km/h, with / without load		%		29				38		
PERFORMANCE	5-8		32				38				
	Gradeability - stall, with / without load		%		32				38		

H230XD48 / H250XD48 SPECIFICATIONS <

	GENERAL		H230XD48				H250XD48						
	Item	Description	Unit	Value	Value	Value	Value	Value	Value	Value			
GENERAL	1-1	Manufacturer		HYSTER				HYSTER					
	1-2	Model designation		H230XD48				H250XD48					
	1-3	Powertrain / drivetrain		Diesel				Diesel					
	1-4	Operator type		Seated				Seated					
	1-5	Rated capacity / rated load	Q	lbs	kg	23,000	10,433	25,000	11,340				
	1-6	Load center distance	c ₁	in	mm	48	1220	48	1220				
	1-8	Load distance	x	in	mm	35	889	35	889				
	1-9	Wheelbase	y	in	mm	130	3,300	130	3,300				
	WT.	2-1	Total truck weight without load		lbs	kg	41,429	18,792	43,193	19,592			
2-2		Axle loading with load, front / rear		lbs	kg	58,743	26,646	5,686	2,579	61,979	28,113	6,213	2,818
2-3		Axle loading without load, front / rear		lbs	kg	21,050	9,548	20,379	9,244	21,008	9,529	22,185	10,063
WHEELS	3-1	Tire type		Pneumatic				Pneumatic					
	3-2	Tire size, front		12.00-20 20PR				12.00-20 20PR					
	3-3	Tire size, rear		12.00-20 20PR				12.00-20 20PR					
	3-5	Wheels, number front / rear (x = driven wheels)		x4 / 2				x4 / 2					
	3-6	Tread, front	b ₁₀	in	mm	72.5	1,842	72.5	1,842				
	3-7	Tread, rear	b ₁₁	in	mm	78.7	2,000	78.7	2,000				
	DIMENSIONS	4-1	Mast tilt, forward / backward	α/β	deg	deg	15° / 12°				15° / 12°		
4-2		Height, mast lowered	h ₁	in	mm	141	3,568	141	3,568				
4-3		Free lift (top of forks)	h ₂	in	mm	0	0	0	0				
4-4		Lift (top of forks)	h ₃	in	mm	147	3,750	147	3,750				
4-5		Height, mast extended	h ₄	in	mm	213	5,398	213	5,398				
4-7		Height to top of operator compartment (open cab)	h ₅	in	mm	121.4	3,083	121.4	3,083				
4-7-1		Height, top of operator comp (closed cab)	h ₆	in	mm	122.4	3,110	122.4	3,110				
4-7-2		Height, top of operator comp (closed cab w/ airco)	h ₆	in	mm	122.4	3,110	122.4	3,110				
4-7-3		Height, top of operator comp (closed cab w/ strobe light)	h ₆	in	mm	126.2	3,205	126.2	3,205				
4-7-4		Height, top of operator comp (closed cab w/ work lights)	h ₆	in	mm	128.3	3,259	128.3	3,259				
4-7-5		Height, top of operator comp (closed cab w/ airco & strobe)	h ₆	in	mm	127.4	3,235	127.4	3,235				
4-8		Seat height to seat point index	h ₇	in	mm	74.9	1,903	74.9	1,903				
4-19		Overall length	l ₁	in	mm	293	7,438	293	7,438				
4-20		Length to face of forks	l ₂	in	mm	197	4,998	197	4,998				
4-21		Overall width	b ₂	in	mm	100	2,541	100	2,541				
4-22		Fork dimensions ISO 2331	s/e/l	in	mm	3.5 / 8 / 96	90 / 200 / 2,440	3.5 / 8 / 96	90 / 200 / 2,440				
4-23		Fork carriage type		Standard pin type carriage				Standard pin type carriage					
4-24		Fork carriage width	b ₃	in	mm	98.3	2,496	98.3	2,496				
4-25-1		Distance between fork-arms, minimum (in-in)	b ₄	in	mm	2.8	70	2.8	70				
4-25-2		Distance between fork-arms, maximum (out-out)	b ₅	in	mm	95.3	2,420	95.3	2,420				
4-30		Sideshift	b ₈	in	mm	0	0	0	0				
4-31		Ground clearance, with load, below mast	m ₁	in	mm	10	245	10	245				
4-32		Ground clearance, center of wheelbase	m ₂	in	mm	13	341	13	341				
4-34	Min. aisle width (add load length and clearance)	Ast	in	mm	215	5,473	215	5,473					
4-35	Outside turning radius	W _e	in	mm	180	4,584	180	4,584					
PERFORMANCE	PERFORMANCE		Cummins QSB 6.7L Tier 4F Engine										
	5-1	Travel speed, with / without load (1)	mph	km/h	17	27	18	29	17	27	18	29	
	5-1-1	Travel speed, with load locked / without load	mph	km/h	On request		On request		On request		On request		
	5-2	Lifting speed, with / without load 126cc pump	ft/min	m/s	81	0.41	91	0.46	81	0.41	91	0.46	
	5-3	Lowering speed with / without load	ft/min	m/s	98	0.50	94	0.48	98	0.50	94	0.48	
	5-5	Drawbar pull - 1 mph 1.6 km/h, with / without load	lbs.	kN	23,100	109	25,900	121	23,000	109	24,000	111	
	5-6	Drawbar pull - stall, with / without load	lbs.	kN	25,900	121	26,800	123	25,800	121	26,800	123	
	5-7	Gradeability - 1 mph 1.6 km/h, with / without load	%		40		34		38		38		
	5-8	Gradeability - stall, with / without load	%		46		34		44		38		
	PERFORMANCE		Cummins QSB 6.7L Tier 3 Engine										
	5-1	Travel speed, with / without load (1)	mph	km/h	17	27	18	29	17	27	18	29	
	5-1-1	Travel speed, with load locked / without load	mph	km/h	On request		On request		On request		On request		
	5-2	Lifting speed, with / without load 111cc pump	ft/min	m/s	71	0.36	79	0.40	71	0.36	79	0.40	
	5-3	Lowering speed with / without load	ft/min	m/s	98	0.50	94	0.48	98	0.50	94	0.48	
	5-5	Drawbar pull - 1 mph 1.6 km/h, with / without load	lbs.	kN	21,000	100	21,900	101	20,900	99	21,900	101	
	5-6	Drawbar pull - stall, with / without load	lbs.	kN	23,700	112	24,600	114	23,600	112	24,600	114	
	5-7	Gradeability - 1 mph 1.6 km/h, with / without load	%		36		34		35		38		
5-8	Gradeability - stall, with / without load	%		41		34		40		38			

> POWERTRAINS

GENERAL	1-1	Manufacturer				HYSTER	
	1-2	Model designation				H300-360XD / H210-250XD48	
	1-3	Powertrain / drivetrain				Diesel	

ENGINE	7-1	Engine manufacturer / model			Cummins / QSB 6.7L		Cummins / QSB 6.7L	
	7-1a	EPA / CE compliance			Tier 3 / Stage IIIA		Tier 4F / Stage IV	
	7-2	Engine power output according to ISO 1585	hp	kW	155	116	164	122
	7-2-1	Engine power output - Peak	hp	kW	155	116	168	125
	7-3	Governed speed	rpm	1/min	2,300		2,300	
	7-3-1	Engine torque @rpm (1/min)	lb-ft	N-m	440 @ 1,500	597 @ 1,500	540 @ 1,500	732 @ 1,500
	7-4	Number of cylinders / displacement	# / in ³	# / cm ³	6 / 409	6 / 6,700	6 / 409	6 / 6,700
		Turbocharger	Type		Wastegate		Variable geometry, water cooled	
	7-8	Alternator output	Amps		120		120	
	7-9	Electrical system voltage	V		24		24	
7-10	Battery voltage, rated capacity	V / Ah		24 / 102		24 / 102		

DRIVE	8-1	Drive control / Transmission	Type / #	Powershift Transmission			
	8-2	Transmission manufacturer / type	Type / #	ZF / WG161			
	8-4	Transmission speeds forward / backward	#	3 / 3			
	8-5	Coupling	Type	Torque Converter			
	8-6	Wheel drive / drive axle manufacturer / type	Type / #	Kessler / D81			
	8-11	Service brake	Type	Oil immersed (wet) disc			
	8-12	Parking brake	Type	Spring applied, dry disc on drive axle			

MISC	10-1	Operating pressure for attachments	psi	l	3,263	22.5	3,263	22.5
	10-2	Oil volume for attachments	gal/min	l/min	26.4	100	26.4	100
	10-3	Hydraulic tank capacity	gal	l	37	140	37	140
	10-4	Fuel tank capacity	gal	l	42	158	42	158
	10-4-1	DEF tank capacity	gal	l	NA	NA	5	19
	10-5	Steering design			Hydraulic power steering		Hydraulic power steering	
	10-6	Number of steering rotation			4.5		4.5	

NOTES:


Specifications are affected by the condition of the vehicle and how it is equipped, as well as the nature and condition of the operating area. Inform your dealer of the nature and condition of the intended operating area when purchasing your Hyster® truck.

- (1) Travel speed laden/unladen limited at 15.5 mph / 25 km/h as factory default
- (2) T4 engine based on low mount exhaust.

All capacities are according to EN1459.

All specifications and capacities are valid for trucks equipped with a Hyster® container handling spreader for handling ISO containers.

Specification data is based on VDI 2198.

 Safety: This truck conforms to the current EU and ANSI requirements.

NOTICE:

Care must be exercised when handling elevated loads. Operators must be trained and must read, understand and follow the instructions contained in the Operating Manual.

All values are nominal values and they are subject to tolerances. For further information, please contact the manufacturer.

Hyster products are subject to change without notice.

Lift trucks illustrated may feature optional equipment. Values may vary with alternative configurations.

CERTIFICATION: Hyster lift trucks meet the design and construction requirements of B56.1-1969, per OSHA Section 1910.178(a)(2), and also comply with the B56.1 revision in effect at time of manufacture. Certification of compliance with the applicable ANSI standards appears on the lift truck. Performance specifications are for a truck equipped as described under Standard Equipment on this Technical Guide. Performance specifications are affected by the condition of the vehicle and how it is equipped, as well as by the nature, condition of the operating area, proper service and maintenance of the vehicle. If these specifications are critical, the proposed application should be discussed with your dealer.

NOTE: Specifications, unless otherwise listed, are for a standard truck without optional equipment.

MAST AND CAPACITY INFORMATION <

RATED CAPACITY LBS: H300-330XD @ 24 IN LOAD CENTER

2 STAGE NFL	4-4 Lift height TOF		4-4 Lift height BOF		4-2 Overall lowered height		4-5 Overall extended height		Mast max roller lap (retracted) (variable lap) "l_max"		Mast max roller lap (extended) (variable lap) "l_max"		Mast weight		Standard Pin Type carriage				Apron Pin Type carriage				QD DFSSFP Carriage				
															H300XD		H330XD		H300XD		H330XD		H300XD		H330XD		
	in	mm	in	mm	in	mm	in	mm	in	mm	in	mm	lbs	kg	lbs	kg	lbs	kg	lbs	kg	lbs	kg	lbs	kg	lbs	kg	lbs
108	2750	104	2660	121	3068	174	4398	100	2520	47	1190	5567	2525	30,000	13,600	33,000	15,000	30,000	13,600	33,000	15,000	29,300	13,300	32,400	14,700		
118	3000	114	2910	126	3193	183	4648	105	2645	47	1190	5730	2599	30,000	13,600	33,000	15,000	30,000	13,608	33,000	15,000	29,300	13,300	32,400	14,700		
127	3250	124	3160	131	3318	193	4898	110	2770	47	1190	5900	2676	30,000	13,600	33,000	15,000	30,000	13,608	33,000	15,000	29,300	13,300	32,400	14,700		
137	3500	134	3410	136	3443	203	5148	114	2895	47	1190	6065	2751	30,000	13,600	33,000	15,000	30,000	13,608	33,000	15,000	29,300	13,300	32,400	14,700		
147	3750	144	3660	141	3568	213	5398	119	3020	47	1190	6235	2828	30,000	13,600	33,000	15,000	30,000	13,608	33,000	15,000	29,300	13,300	32,400	14,700		
157	4000	153	3910	146	3693	223	5648	124	3145	47	1190	6398	2902	30,000	13,600	33,000	15,000	30,000	13,608	33,000	15,000	29,300	13,300	32,400	14,700		
177	4500	173	4410	156	3943	243	6148	134	3395	47	1190	6733	3054	30,000	13,600	33,000	15,000	30,000	13,608	33,000	15,000	29,300	13,300	32,400	14,700		
187	4750	183	4660	161	4068	252	6398	139	3520	47	1190	7022	3185	30,000	13,600	33,000	15,000	30,000	13,608	33,000	15,000	29,300	13,300	32,400	14,700		
196	5000	193	4910	166	4193	262	6648	144	3645	47	1190	7194	3263	30,000	13,600	33,000	15,000	30,000	13,608	33,000	15,000	29,300	13,300	32,400	14,700		
216	5500	212	5410	175	4443	282	7148	154	3895	47	1190	7873	3571	29,600	13,400	32,600	14,790	29,600	13,400	32,500	14,740	29,000	13,150	32,300	14,650		
236	6000	232	5910	185	4693	302	7648	164	4145	47	1190	8210	3724	29,200	13,240	32,200	14,600	29,100	13,200	32,000	14,510	25,500	11,570	31,000	14,060		
246	6250	242	6160	190	4818	311	7898	169	4270	47	1190	8384	3803	29,000	13,150	31,900	14,470	28,900	13,100	31,800	14,420	23,300	10,570	23,400	10,610		
255	6500	252	6410	195	4943	321	8148	174	4395	47	1190	8552	3879	28,800	13,060	31,700	14,380	28,600	12,970	31,500	14,290	21,200	9,620	21,200	9,620		
275	7000	272	6910	205	5193	341	8648	183	4645	47	1190	9017	4090	28,300	12,830	31,200	14,150	28,000	12,700	30,900	14,020	17,500	7,940	17,400	7,890		

The capacity for models H300XD, H330XD, H360XD are calculated using 72" x 3.5" x 8" forks.

RATED CAPACITY LBS: H360XD @ 24 IN LOAD CENTER / H210XD48 @ 48 IN LOAD CENTER

2 STAGE NFL	4-4 Lift height TOF		4-4 Lift height BOF		4-2 Overall lowered height		4-5 Overall extended height		Mast max roller lap (retracted) (variable lap) "l_max"		Mast max roller lap (extended) (variable lap) "l_max"		Mast weight		Standard Pin Type carriage				Apron Pin Type carriage				QD DFSSFP Carriage				
															H360XD		H210XD48		H360XD		H210XD48		H360XD		H210XD48		
	in	mm	in	mm	in	mm	in	mm	in	mm	in	mm	lbs	kg	lbs	kg	lbs	kg	lbs	kg	lbs	kg	lbs	kg	lbs	kg	lbs
108	2750	104	2660	121	3068	174	4398	100	2520	47	1190	5567	2525	36,000	16,330	21,000	9,525	36,000	16,330	21,000	9,525	35,400	16,060	20,500	9,299		
118	3000	114	2910	126	3193	183	4648	105	2645	47	1190	5730	2599	36,000	16,330	21,000	9,525	36,000	16,330	21,000	9,525	35,400	16,060	20,500	9,299		
127	3250	124	3160	131	3318	193	4898	110	2770	47	1190	5900	2676	36,000	16,330	21,000	9,525	36,000	16,330	21,000	9,525	35,400	16,060	20,500	9,299		
137	3500	134	3410	136	3443	203	5148	114	2895	47	1190	6065	2751	36,000	16,330	21,000	9,525	36,000	16,330	21,000	9,525	35,400	16,060	20,500	9,299		
147	3750	144	3660	141	3568	213	5398	119	3020	47	1190	6235	2828	36,000	16,330	21,000	9,525	36,000	16,330	21,000	9,525	35,400	16,060	20,500	9,299		
157	4000	153	3910	146	3693	223	5648	124	3145	47	1190	6398	2902	36,000	16,330	21,000	9,525	36,000	16,330	21,000	9,525	35,400	16,060	20,500	9,299		
177	4500	173	4410	156	3943	243	6148	134	3395	47	1190	6733	3054	36,000	16,330	21,000	9,525	36,000	16,330	21,000	9,525	35,400	16,060	20,500	9,299		
187	4750	183	4660	161	4068	252	6398	139	3520	47	1190	7022	3185	36,000	16,330	21,000	9,525	36,000	16,330	21,000	9,525	35,400	16,060	20,500	9,299		
196	5000	193	4910	166	4193	262	6648	144	3645	47	1190	7194	3263	36,000	16,330	21,000	9,525	36,000	16,330	21,000	9,525	35,300	16,010	20,500	9,299		
216	5500	212	5410	175	4443	282	7148	154	3895	47	1190	7873	3571	35,600	16,150	20,700	9,400	35,600	16,150	20,600	9,340	31,400	14,240	20,300	9,210		
236	6000	232	5910	185	4693	302	7648	164	4145	47	1190	8210	3724	35,100	15,920	20,400	9,250	35,100	15,920	20,300	9,210	25,800	11,700	20,000	9,070		
246	6250	242	6160	190	4818	311	7898	169	4270	47	1190	8384	3803	34,900	15,830	20,300	9,200	34,800	15,790	20,100	9,120	23,400	10,610	19,800	8,980		
255	6500	252	6410	195	4943	321	8148	174	4395	47	1190	8552	3879	34,700	15,740	20,100	9,100	34,500	15,650	19,900	9,030	21,000	9,530	19,600	8,890		
275	7000	272	6910	205	5193	341	8648	183	4645	47	1190	9017	4090	34,200	15,510	19,800	9,000	33,900	15,380	19,500	8,850	17,200	7,800	16,700	7,570		

The capacity for models H300XD, H330XD, H360XD are calculated using 72" x 3.5" x 8" forks.

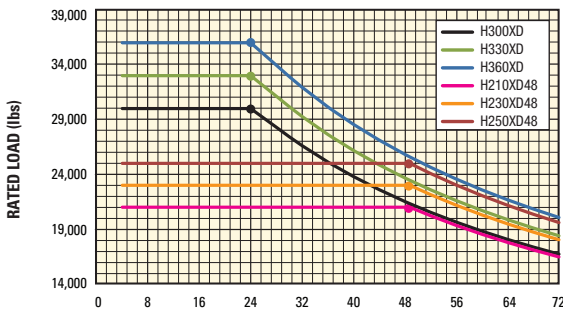
The H210XD48, H230XD48, H250XD48 are calculated using 96" x 3.5" x 8" forks.

RATED CAPACITY LBS: H230-250XD48 @ 48 IN LOAD CENTER

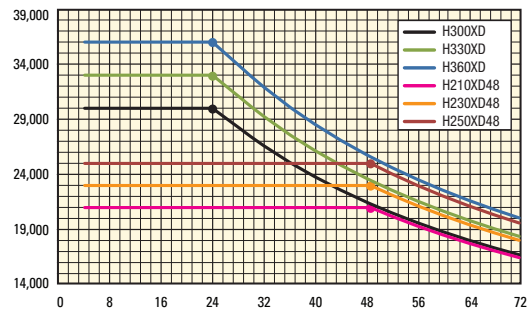
2 STAGE NFL	4-4 Lift height TOF		4-4 Lift height BOF		4-2 Overall lowered height		4-5 Overall extended height		Mast max roller lap (retracted) (variable lap) "l_max"		Mast max roller lap (extended) (variable lap) "l_max"		Mast weight		Standard Pin Type carriage				Apron Pin Type carriage				QD DFSSFP Carriage				
															H230XD48		H250XD48		H230XD48		H250XD48		H230XD48		H250XD48		
	in	mm	in	mm	in	mm	in	mm	in	mm	in	mm	lbs	kg	lbs	kg	lbs	kg	lbs	kg	lbs	kg	lbs	kg	lbs	kg	lbs
108	2750	104	2660	121	3068	174	4398	100	2520	47	1190	5567	2525	23,000	10,430	25,000	11,340	23,000	10,430	25,000	11,340	22,500	10,200	24,500	11,110		
118	3000	114	2910	126	3193	183	4648	105	2645	47	1190	5730	2599	23,000	10,430	25,000	11,340	23,000	10,430	25,000	11,340	22,500	10,200	24,500	11,110		
127	3250	124	3160	131	3318	193	4898	110	2770	47	1190	5900	2676	23,000	10,430	25,000	11,340	23,000	10,430	25,000	11,340	22,500	10,200	24,500	11,110		
137	3500	134	3410	136	3443	203	5148	114	2895	47	1190	6065	2751	23,000	10,430	25,000	11,340	23,000	10,430	25,000	11,340	22,500	10,200	24,500	11,110		
147	3750	144	3660	141	3568	213	5398	119	3020	47	1190	6235	2828	23,000	10,430	25,000	11,340	23,000	10,430	25,000	11,340	22,500	10,200	24,500	11,110		
157	4000	153	3910	146	3693	223	5648	124	3145	47	1190	6398	2902	23,000	10,430	25,000	11,340	23,000	10,430	25,000	11,340	22,500	10,200	24,500	11,110		
177	4500	173	4410	156	3943	243	6148	134	3395	47	1190	6733	3054	23,000	10,430	25,000	11,340	23,000	10,430	25,000	11,340	22,500	10,200	24,500	11,110		
187	4750	183	4660	161	4068	252	6398	139	3520	47	1190	7022	3185	23,000	10,430	25,000	11,340	23,000	10,430	25,000	11,340	22,500	10,200	24,500	11,110		
196	5000	193	4910	166	4193	262	6648	144	3645	47	1190	7194	3263	23,000	10,430	25,000	11,340	23,000	10,430	25,000	11,340	22,500	10,200	24,500	11,110		
216	5500	212	5410	175	4443	282	7148	154	3895	47	1190	7873	3571	22,700	10,300	24,700	11,200	22,700	10,300	24,700	11,200	22,400	10,160	24,500	11,110		
236	6000	232	5910	185	4693	302	7648	164	4145	47	1190	8210	3724	22,400	10,180	24,400	11,070	22,400	10,160	24,400	11,070	22,000	9,980	23,900	10,840		
246	6250	242	6160	190	4818	311	7898	169	4270	47	1190	8384	3803	22,200	10,070	24,200	10,980	22,200	10,070	24,200	10,980	21,700	9,840	22,000	9,980		
255	65																										

> CAPACITY RATINGS

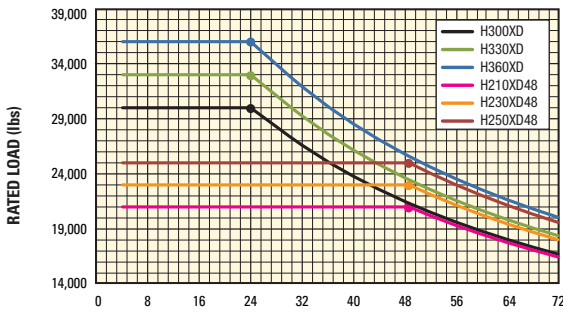
RATED LOAD VS. LOAD CENTER | STD PIN TYPE | U.S. CUSTOMARY



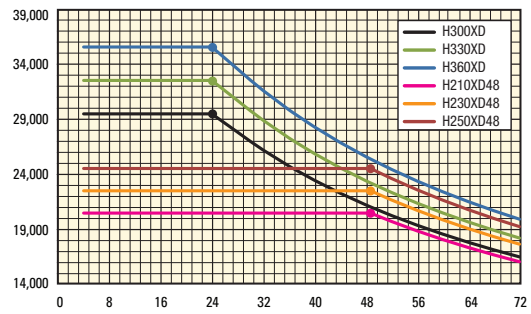
RATED LOAD VS. LOAD CENTER | PIN TYPE WITH FP | U.S. CUSTOMARY



RATED LOAD VS. LOAD CENTER | INTEGRAL & APRON FP | U.S. CUSTOMARY



RATED LOAD VS. LOAD CENTER | DFSSFP | U.S. CUSTOMARY



LOAD CENTER (in)
Conversion Factor: 1.0" = 25.4 mm 1 lb = 0.45 kg

Contact your dealer for other capacity information.

> FEATURES AND OPTIONS

PERFORMANCE	STD	OPT
Cummins QSB 6.7L tier 4F diesel engine 164 hp (122 kW)*	x	
Cummins QSB 6.7L tier 3 diesel engine 155 hp (116 kW)*	x	
Tier 4 / Stage IV compliant	x	
Tier 3 / Stage IIIA compliant	x	
Wastegate turbocharger, water cooled*	x	
Variable geometry turbocharger, water cooled*	x	
On-demand cooling fan	x	
120 amp alternator	x	
Performance modes	x	
Powertrain protection system	x	
Heavy duty air intake	x	
Heavy duty air intake (raised)		x
Low mount exhaust (below chassis)	x	
High mount exhaust		x
ZF Transmission WG161 3-speeds fwd/3-speeds reverse auto-shifting	x	
Kessler D81 drive axle with wet disc brakes	x	
DRIVE	STD	OPT
Speed limiter - unconditional and customer adjustable		x
Travel speed limiter - loaded (adjustable)		x
12.00 - 20 20PR Trelleborg pneumatic bias ply drive and steer tires	x	
12.00 - R20 Michelin XZM Radial drive and steer tires		x
12.00 - R20 Trelleborg radial drive and steer tires		x
12.00 - 20 Pneumatic shaped solid drive and steer tires		x
LIFT	STD	OPT
126cc dual pump hydraulic system	x	
On-demand load sensing hydraulic system	x	
Automatic throttle-up when lifting (in neutral or inching)	x	
Variable lap mast for low roller forces	x	
2 Stage non free lift mast	x	

2 Stage full free lift mast		x
3 Stage full free lift mast		x
Mast tilt - 5° forward / 6° back		x
Mast tilt - 5° forward / 12° back		x
Mast tilt - 15° forward / 10° back		x
Mast tilt - 15° forward / 12° back	x	
Mast tilt - 20.5° forward / 7° back		x
Hydraulic accumulator		x
Pressure compensated lowering	x	
Hydraulic system temperature protection with performance de-rate		x
HANDLING	STD	OPT
Mast tilt indicator - mechanical		x
98.3" (2496mm) Pin type carriage with mechanical fork locks	x	
98.3" (2496mm) Pin type carriage with simultaneous and independent fork positioner		x
98.3" (2496mm) Pin type apron-style sideshift carriage		x
98.4" (2500mm) Pin type apron-style sideshift carriage with simultaneous fork positioner		x
98.3" (2496mm) Pin type apron-style sideshift carriage with simultaneous and independent fork positioner		x
98.3" (2498mm) QD hook type dual function sideshift carriage with simultaneous and independent fork positioner		x
98.3" (2498mm) QD hook type dual function sideshift carriage with simultaneous fork positioner and 2 auxiliary functions		x
72" (1824mm) High load backrest		x
80" (2040mm) High load backrest		x
98" (2500mm) High load stabilizer (for lumber applications)		x
72" long x 3.5" thick x 7.9" wide (1830mm x 90mm x 200mm) forks	x	
Pin type forks (various sizes)		x
Pin type forks for lumber applications		x
Hook type quick disconnect DFSSFP forks (various sizes)		x

FEATURES AND OPTIONS <

ERGONOMICS	STD	OPT
Open operator compartment (without doors & screens)	x	
Enclosed operator cabin		x
Powered tilt operator compartment for service		x
Manual tilt operator compartment for service	x	
Isolated cabin mounting for low noise and vibration	x	
Operator presence system	x	
Swivel Mechanism for Operator Seat		x
Mechanical suspension seat	x	
Air suspension seat		x
Deluxe air suspension seat		x
Low backrest seat	x	
High backrest seat		x
Additional armrest on left side	x	
Cloth seat cover		x
Vinyl seat cover	x	
Seat heating		x
Seat ventilation		x
2-point high visibility seatbelt	x	
3-point high visibility seatbelt		x
Lateral seat sliding mechanism		x
Floor mat	x	
Coat hook	x	
Front, top and rear wipers		x
"H"-pattern front wiper		x
"I"-pattern front wiper		x
Laminated glass operator compartment front window		x
Tinted operator compartment windows (all)		x
Tinted operator compartment top window		x
Rain top		x
Plexiglass shield in front of front window		x
Wire mesh installed on top of operator compartment		x
Vertical steel bar front window guard		x
Operator shield wire mesh		x
7" Integrated performance display	x	
Touchpoint™ mini levers hydraulic control integrated in control arm	x	
Joystick hydraulic control integrated in control arm		x
Steering wheel without spinner knob	x	
Steering wheel with spinner knob		x
Directional control lever	x	
Hyster Monotrol pedal directional control		x
Directional control on mini-levers or joystick		x
Park brake - manual	x	
Park brake - automatic		x
Interior wide angle mirrors	x	
Heater with adjustable speed fan		x
Diesel fueled cabin heater		x
Telescoping & tilting steering column	x	
USB outlet inside armrest	x	
24-12 DC converter with 2 sockets and 2 USB outlets		x
24-12 DC converter with 1 socket and 2 USB outlets	x	
Automatic climate control		x
Interior dome light	x	
Reading light		x
Sun shades on top and rear		x
Sun visors front window		x
Trainer seat		x
Recirculation fan		x
Additional recirculation fan		x
Accessory mounting bar on cab front right pillar		x
Document holder on cab front right pillar		x
Heated top- and/or rear window		x
Radio preparation set-up (wiring, two speakers and antenna)		x

*Standard or optional in selected markets. Other options available through Special Products Engineering Department (SPED). Contact your local Hyster® dealer for details.

VISIBILITY	STD	OPT
Steel bars on top of cab (open operator compartment)		x
Top window with armoured glass - FOPS certified (enclosed operator cabin)		x
Steel bars under armoured glass top window (enclosed operator cabin)		x
Exterior mirrors mounted to cab		x
Rear view camera system		x
Radar object detection system		x
Halogen work lights		x
High performance LED work lights		x
Two head lights mounted on front fenders		x
Four mast mounted work lights		x
Four cabin mounted work lights		x
Two rearward work lights mounted on the cabin		x
LED stop/tail/brake lights	x	
Turn signals, hazard & marker lights (LED)		x
OPERATION	STD	OPT
Air horn 112 dBA		x
Electric horn 105 dBA	x	
Visible alarm – amber strobe light, key switch activated		x
Audible alarm – reverse direction activated 82–102 dB(A), self-adjusting		x
Audible alarm – reverse direction white noise		x
Forward / reverse motion alarm		x
Blue LED spotlight – rear / front and rear		x
Hydraulic load weighing system		x
Tire pressure monitoring system		x
Automatic climate control shut-off with open door		x
Automatic truck shutdown with timer		x
Preventative maintenance reminder in display		x
Customer CANBUS connection		x
Lockable battery disconnect switch		x
Battery jump start connector (NATO plug)		x
Truck Start with key switch and start button	x	
Operator password (display) for truck start		x
Seatbelt interlock for truck start		x
Power distribution group with fuses	x	
Fuses partially replaced by electric circuit breakers		x
Non-lockable fuel cap	x	
Lockable fuel cap		x
Diesel fuel inlet strainer in filler neck		x
Hyster Tracker wireless asset management system	x	
Hyster Tracker wireless asset management - access / verification		x
Hyster Tracker wireless asset management - monitoring		x
Auto greasing system for basic truck & outer mast		x
24 volt electrical system	x	
Engine block heater 110 & 240 volt		x
Steer wheel lug nut protection		x
Front mud flaps		x
Rear mud flaps		x
Lifting eyes - 2 front and 2 rear		x
Wire mesh belly pan		x
Wire mesh and plates belly pan		x
APPEARANCE	STD	OPT
Second capacity plate		x
Hyster yellow paint base truck	x	
Special paint base truck		x
Operator compartment special paint (outside only)		x
Hazard warning striping on counterweight		x
SUPPLEMENTAL	STD	OPT
Literature package	x	
Operator's manual	x	
CE certification		x
U.L. Label - standard construction	x	
Warranty: 12 months / 2,000 hours parts & labor manufacturer's warranty		x
Warranty: 12 months / 2,000 hours parts manufacturer's warranty	x	

> FRONT END EQUIPMENT

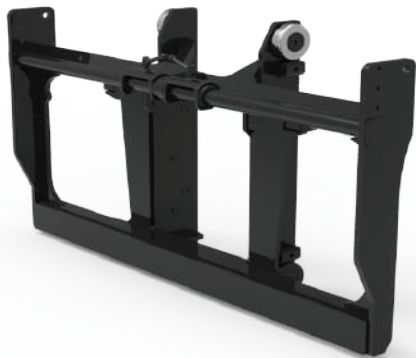
RANGE OF 2 STAGE NFL MASTS



RANGE OF PIN TYPE AND HOOK TYPE FORKS

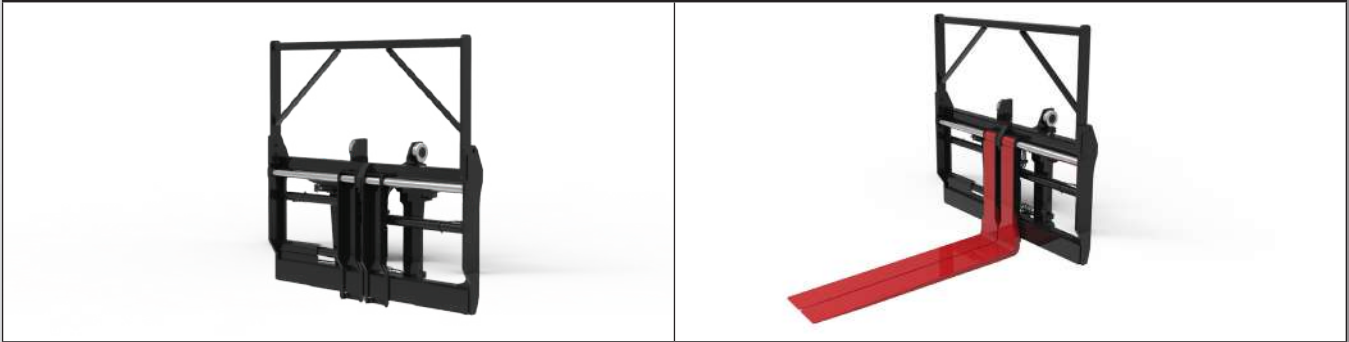


98.5" PIN TYPE STANDARD CARRIAGE





98.5" PIN TYPE APRON STYLE SIDESHIFT CARRIAGE WITH SIMULTANEOUS AND INDEPENDENT FORK POSITIONER (FOR LUMBER APPLICATIONS)



98.5" PIN TYPE CARRIAGE WITH SIMULTANEOUS AND INDEPENDENT FORK POSITIONER



98.5" PIN TYPE APRON STYLE SIDESHIFT CARRIAGE




98.5" QD HOOK TYPE DUAL FUNCTION SIDESHIFT WITH SIMULTANEOUS AND INDEPENDENT FORK POSITIONER





Hyster Company
P.O. Box 7006
Greenville, North Carolina
27835-7006
Part No. H300-360XD/TG
1/2020 Litho in U.S.A.

Visit us online at www.hyster.com or call us at **1-800-HYSTER-1**.

Hyster, , and STRONG PARTNERS. TOUGH TRUCKS. and MONOTROL are registered trademarks in the United States and certain other jurisdictions. Hyster products are subject to change without notice.

Trucks may be shown with optional equipment. © 2019 Hyster Company. All rights reserved.