



AV490
SKID STEER LOADERS

**TOUGH
AGILE
FUEL SAVER**

JOYSTICK DRIVE



www.bullindia.com

THE BEST ALL ROUNDER
Interchangeable attachments



Save 25% more fuel



Sweeper attachment



Backhoe attachment



Concrete mixer attachment



Compactor roller attachment



Forklift attachment



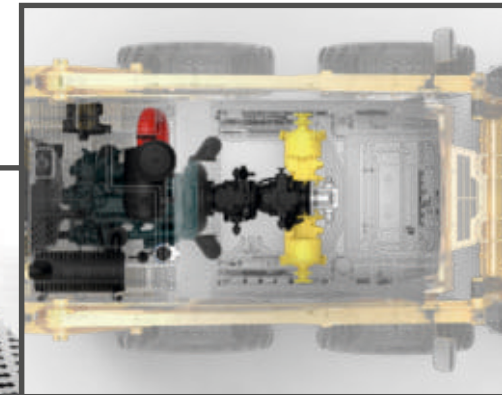
RUN ALL DAY
Forget your Fuel Metre

- Fan for Radiator and cooler are directly mounted on Engine which improves efficiency.
- It saves power resulting in lower fuel consumption.



Easy Serviceability

- Pump is directly coupled to engine via reliable flexible coupling.
- Maintenance free and trouble free operation.
- Pre Cleaner provided for dusty environment.



WE GIVE YOU EYES BEHIND
Rear Camera



- Rear View Camera gives better visibility, Reduces Blind spots.



FUN IN TOUGH WORKS
Inbuilt Led light & Music player



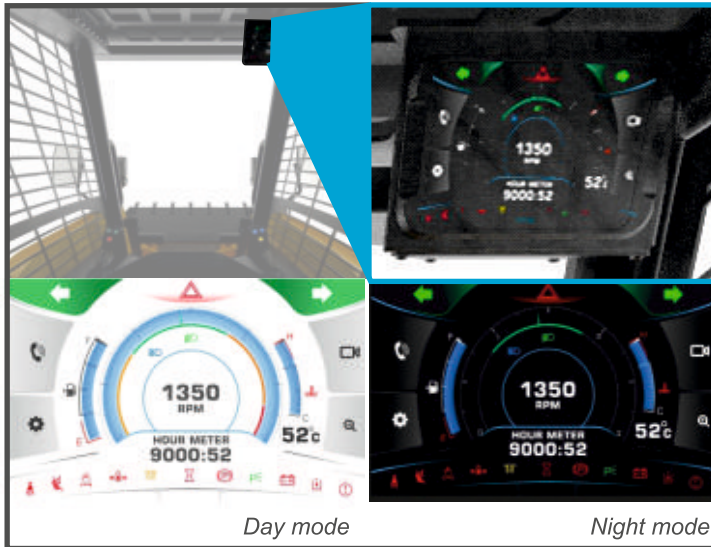
FOOT DECIDES THE SPEED
Foot accelerator for optimal speed management





ALL THE TECH IN TOUCH

Touch Screen Infotainment

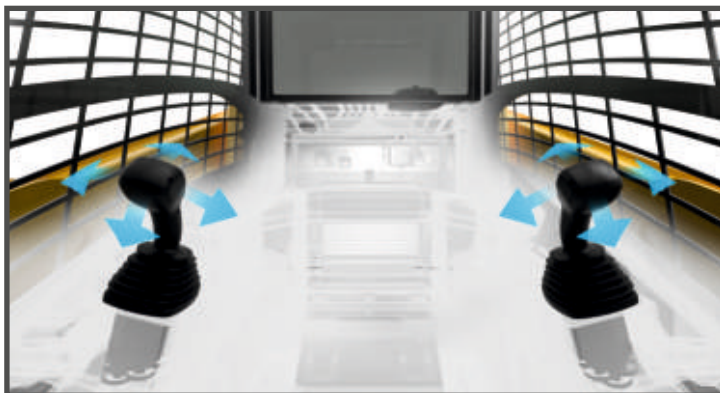


- TFT Resistive touch screen, able to operate even with oily hands.
- Day and Night mode for better visibility.
- Auto Brightness adjustment feature.
- Rear View camera display.



PILOT OPERATED JOYSTICK

For Loader & Travel Operations



Machine Rating

Rated Operating Capacity	Kg	604
Tipping Load	Kg	1208
Pump Capacity	Lpm	60.0
System Relief Pressure	MPa	18.0 / 23.0
Max Travel Speed	Km/hr	14.0

Engine

Model	KUBOTA	
Fuel Type	Diesel	
Cooling	Liquid	
Max.power @ 2700 rpm	36.5kW (49.5 HP)	
Torque	Nm	158.6
No.of. Cylinders	No.	4

Weights

Operating Weight	Kg	2610
------------------	----	------

Electrical

Battery	V	12
Alternator	Amps	90

Capacity

Fuel	L	48
Engine Oil	L	9.5
Coolant	L	7.2
Hydraulic System (Including Tank)	L	65
LH Chain Case	L	20
RH Chain Case	L	20

Drive System

Transmission	Hydrostatic drive with hydraulic pilot operated variable displacement tandem pump with heavy duty radial piston bidirectional motor
Type Of Drive	4WD - Chain Drive

Control

Vehicle Steering	Skid steering, Controlled by a Left hand side Joystick
Loader Hydraulic Tilt And Lift	Single Joystick on right side
Front Auxiliary (std)	Electrical switch on right hand side Joystick

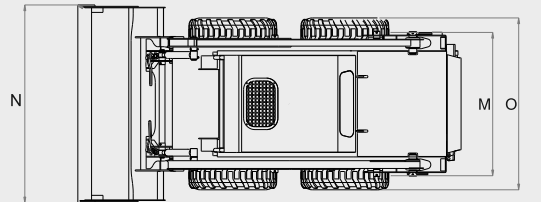
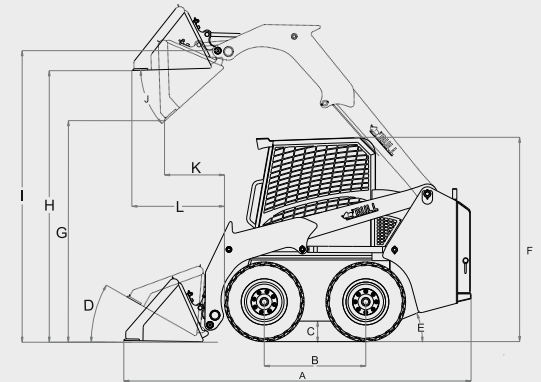
Tyre

10X16.5-10 PR Heavy/Medium Duty

Attachments

Backhoe, Roller Compactor, Sweeper, Auger, Pallet Fork, Concrete mixer, 6 in 1 Bucket.

DIMENSIONS



A	Over All Length	3360 mm	11'-0.28"
B	Wheel Base	980 mm	3'-2.6"
C	Ground Clearance	204 mm	8.03"
D	Roll Back Angle	30°	
E	Departure Angle	27°	
F	Over All Height	1970 mm	6'-5.5"
G	Dump Height @ 40°	2160 mm	7'-1"
H	Load Over Height	2646 mm	8'-8.2"
I	Pin Height	2813 mm	9'-2.7"
J	Dump Angle	42°	
K	Dump Reach	588 mm	1'-11"
L	Max Reach at Full Height	910 mm	2'-11.8"
M	Track Width with spec tyre	1245 mm	4'-1"
N	Bucket Width	1580 mm	5'-2.2"
O	Width Over Tyres-Standard	1500 mm	4'-11"
P	Turning Radius		
	Bucket	2039 mm	6'-8.2"
	Tyre	1125 mm	3'- 8.3"
	Rear Chassis	1426 mm	4'-8.1"

All specifications are subjected to be change

SMART KID

New Class of Backhoe Loader

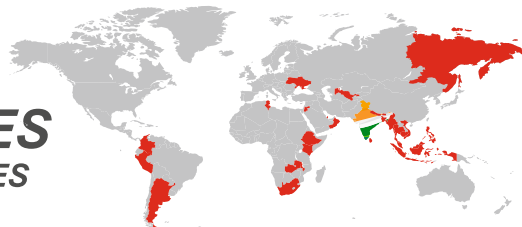
JOYSTICK DRIVE



Widest Range Of Earth Moving Machines



NOW IN
28+ COUNTRIES
150+ SERVICE CENTRES



WhatsApp +91 98422 87770

Email sales@bullmachine.com

exports@bullmachine.com

Facebook YouTube Twitter / bullmachines

Dealer
